

RIASLA 2023 Professional Design Awards - Residential Design

202315 - Fen's Edge

Assigned Entry Number and Project Title:	202315 - Fen's Edge
Project Location:	Westerly, Rhode Island, USA
Completed Year:	2023
Project Size:	.46 acres
Budget for Design + Construction:	Confidential
Submitter's Role:	Lead Designer, Landscape Architect

Summary Statement:

Located in a seaside summer community, this project maximizes the connections to the natural environment and views of the ocean. The goal is to integrate the materials of the modern architecture with the coastal views, natural slope and protected environment. The project scope includes just under a half an acre and was implemented over 5 years. With the original house removed, the entire site was open for design. Siting the new house on top of the property created opportunity for terracing the landscape into 3 levels: driveway and parking, pool terrace and main entry. The architecture has two levels of decks above the pool terrace which called for a landscape plan strong in the two-dimensional design forms with a goal to be of interest from above and in harmony with the ocean views.

Project Narrative:

The landscape architecture team was brought on with the architect at the inception of this project 5 years ago. The architecture was open to the landscape, looking for a seamless flow between the interior and exterior spaces, as well as integration of materials and details. The project was created to provide spaces off the building that would settle the structures into the natural environment. The clients were looking for a landscape that connected traditional garden forms to the contemporary architectural design and the natural surroundings. The challenge here was to work with a small, sloping site, while maintaining an integrated landscape and protecting the adjacent, sensitive environment.

All aspects of the design for the landscape were conceived by the landscape architect, in collaboration with the architect. Our primary role was as designers working directly with the client in developing the site. The design process included site analysis, master plan, schematic design, local and wetlands permitting, design development, construction drawings, and construction observation, including on site placement of large boulders. The team worked closely with the clients to develop a layered, complex and unique design that related the modern architecture to the context of the coastal, summer community.

The scope of the overall design includes a new pool and integrated spa, a kitchen and cutting garden, Zen Garden, custom outdoor fireplace, custom outdoor shower, a corten installation, stone walls, entry posts and plaques, and overall site lighting and planting.

The property slopes down towards the ocean, so drainage was carefully managed to minimize disruption to the fragile environment. Runoff from roof and hardscape were directed to a rain garden at the bottom of the site, planted with natives that returns the property's street-scape to a natural plant mix and intercept the surface flow. Permeable paving was selected for the majority of the site, including a clamshell driveway and reinforced grass for guest parking. Reclaimed and local materials were selected where

RIASLA 2023 Professional Design Awards - Residential Design 202315 - Fen's Edge

Project Narrative (Cont'd):

possible, including reclaimed granite steps, posts and paving, local fieldstone walls, boulders, and rice stone, as well as a local fabrication of the corten steel. All plant material was selected to reflect the context of the site, stand up to salt winds and sun, and provide a low maintenance garden. The majority of the plant material is bayberry, grasses, clethra and sedum.

The abutting property, known as 'The Fen', is a protected landscape by the local conservation foundation. 'The Fen' is short for the 'Fenway' property, acquired by the foundation in 1999 from a group of local landowners. This landscape came with its own setback requirements which helped shape aspects of the design, specifically the outdoor shower. In order for the shower to fit into the property and meet the required setbacks, it was cantilevered out from the wall over the ground below. The bronze enclosure for the shower matches the house and the frosted glass panels are used to let in surrounding light and green landscape, while still maintaining privacy. The final design achieves an experience of floating in nature.

The pool and spa are integrated with the pool terrace and surrounding natural environment, coming out of the natural slope, mirroring the architecture of the house. The heating system for the pool and spa were integrated into the house heating system, eliminating the need for additional mechanics outside the home. Board form concrete walls were used around the pool which eliminates the need for veneer, connects to the contemporary architecture and also kept a narrow granite coping.

Corten steel was used as a unifying material throughout the site, but most significantly in the pool enclosure fence. The inspiration for the fence came from the wooden dune fencing at the beach across the street. This was used wherever pool enclosure was required but as the pool walls became high enough the fencing devolves into an installation with picket placement inspired by the notes from 'Good Day Sunshine' by the Beatles – a favorite song of the clients. Corten is repeated on the entry post plaques, cutting garden beds, garden terracing by the pool, fireplace surround, and as retaining 'walls' used throughout the slope to break up the steps up to the main entry.

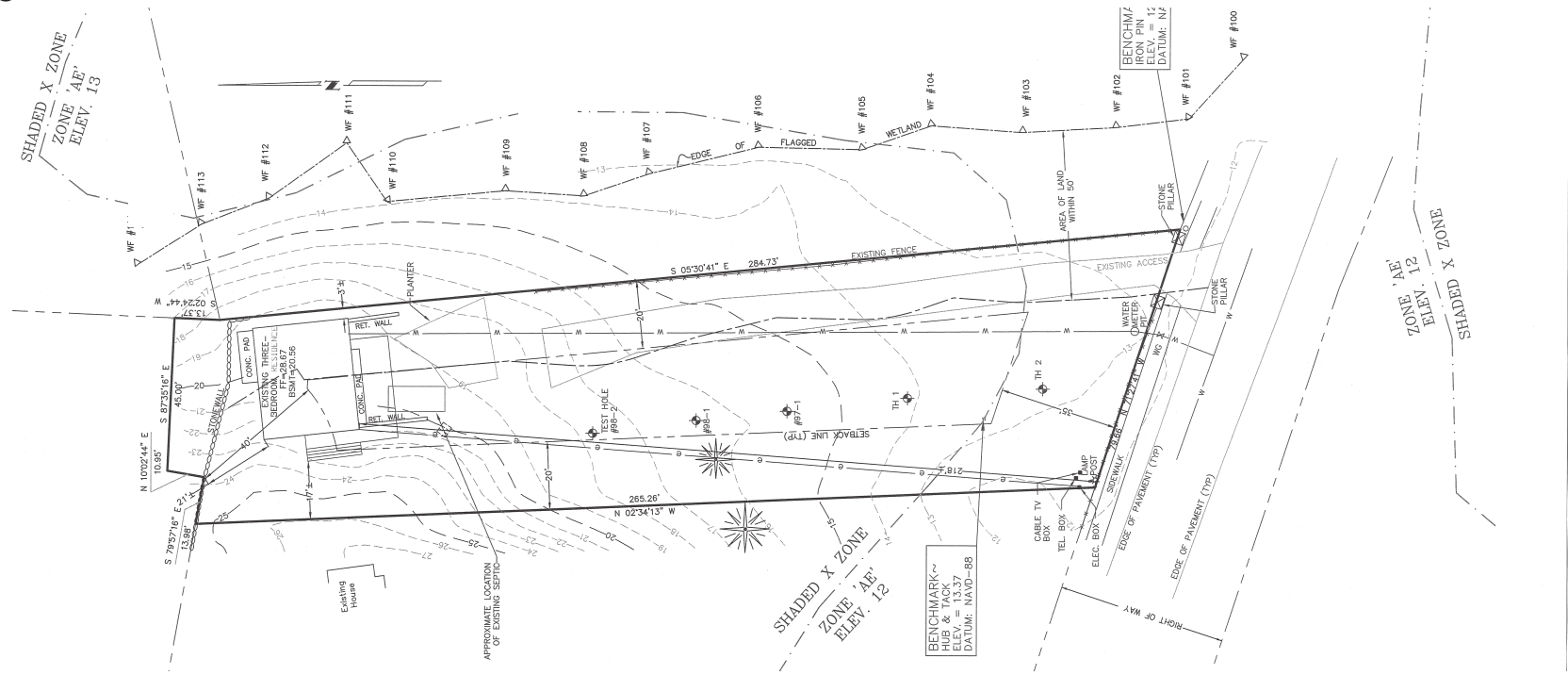
The use of low level, LED lighting through the site gave a glow to the landscape. Bronze path lights with similar dimensions to the corten installation to give the appearance that the fencing is bending down to provide light.

Overall, the design looks to blend the modern with the natural landscape. The community is built up of early 20th century seaside traditional beach houses, with no delineation between property boundaries, so it was important for us to blend the client's modern aesthetic and architecture into the beachside, coastal environment. Pulling the patterns and colors of nature into the design and material selections resulted in a seamlessly modern, beautiful design to be enjoyed for years to come.

RIASLA 2023 Professional Design Awards - Residential Design

202315 - Fen's Edge

SLIDE 1: Existing Conditions



Before conditions looking up driveway towards existing house.



Before conditions looking up down driveway towards ocean.



Before conditions standing west of house looking towards ocean.

RIASLA 2023 Professional Design Awards - Residential Design

202315 - Fen's Edge

SLIDE 2: Proposed Design



Lumion Rendering 1



West side of site looking at house and pool terrace.

Lumion Rendering 2



Standing at dining terrace looking down driveway towards ocean.

Lumion Rendering 3



Proposed cantilevered outdoor shower.

RIASLA 2023 Professional Design Awards - Residential Design
202315 - Fen's Edge

SLIDE 3: Photography

Photo 1



New house, corten pool enclosure fencing, reclaimed granite steps, corten fireplace, natural planting.

*Anthony Crisafulli Photography

Photo 2



Garage, new driveway, corten installation, pool, lighting, reclaimed granite steps, stone walls, planting.

RIASLA 2023 Professional Design Awards - Residential Design
202315 - Fen's Edge

SLIDE 4: Photography

Photo 1



New house, grass parking, corten installation, pool, pool terrace, lighting, board form walls, stone walls, planting.

*Anthony Crisafulli Photography

RIASLA 2023 Professional Design Awards - Residential Design
202315 - Fen's Edge

SLIDE 5: Photography

Photo 1



New house, garage, new driveway, reclaimed granite apron, corten installation, lighting, stone walls, reclaimed granite posts, corten plaques.

*Anthony Crisafulli Photography

RIASLA 2023 Professional Design Awards - Residential Design
202315 - Fen's Edge

SLIDE 6: Photography

Photo 1



New house, reclaimed granite steps, corten retaining walls, corten installation, board formed walls, lighting, stone walls, planting.

RIASLA 2023 Professional Design Awards - Residential Design
202315 - Fen's Edge

SLIDE 7: Photography

Photo 1



New house, reclaimed granite steps, corten fence and gate, corten installation, lighting, pool, new garage, driveway, planting.

*Anthony Crisafulli Photography

RIASLA 2023 Professional Design Awards - Residential Design
202315 - Fen's Edge

SLIDE 8: Photography

Photo 1



Pool terrace, stone walls and bench, reclaimed granite terrace, ipe decking, pool and spa, new driveway, new garage.

*Anthony Crisafulli Photography

RIASLA 2023 Professional Design Awards - Residential Design
202315 - Fen's Edge

SLIDE 9: Photography

Photo 1



Pool terrace, stone walls, board form walls, corten installation, reclaimed granite, reinforced turf, lighting at dusk, planting.

*Anthony Crisafulli Photography

SLIDE 10: Photography

Photo 1



Detail of corten pool enclosure fence and gate. Also shown: ipe decking, granite coping, walls, reclaimed granite bench, lighting, planting.

*Anthony Crisafulli Photography

SLIDE 11: Photography

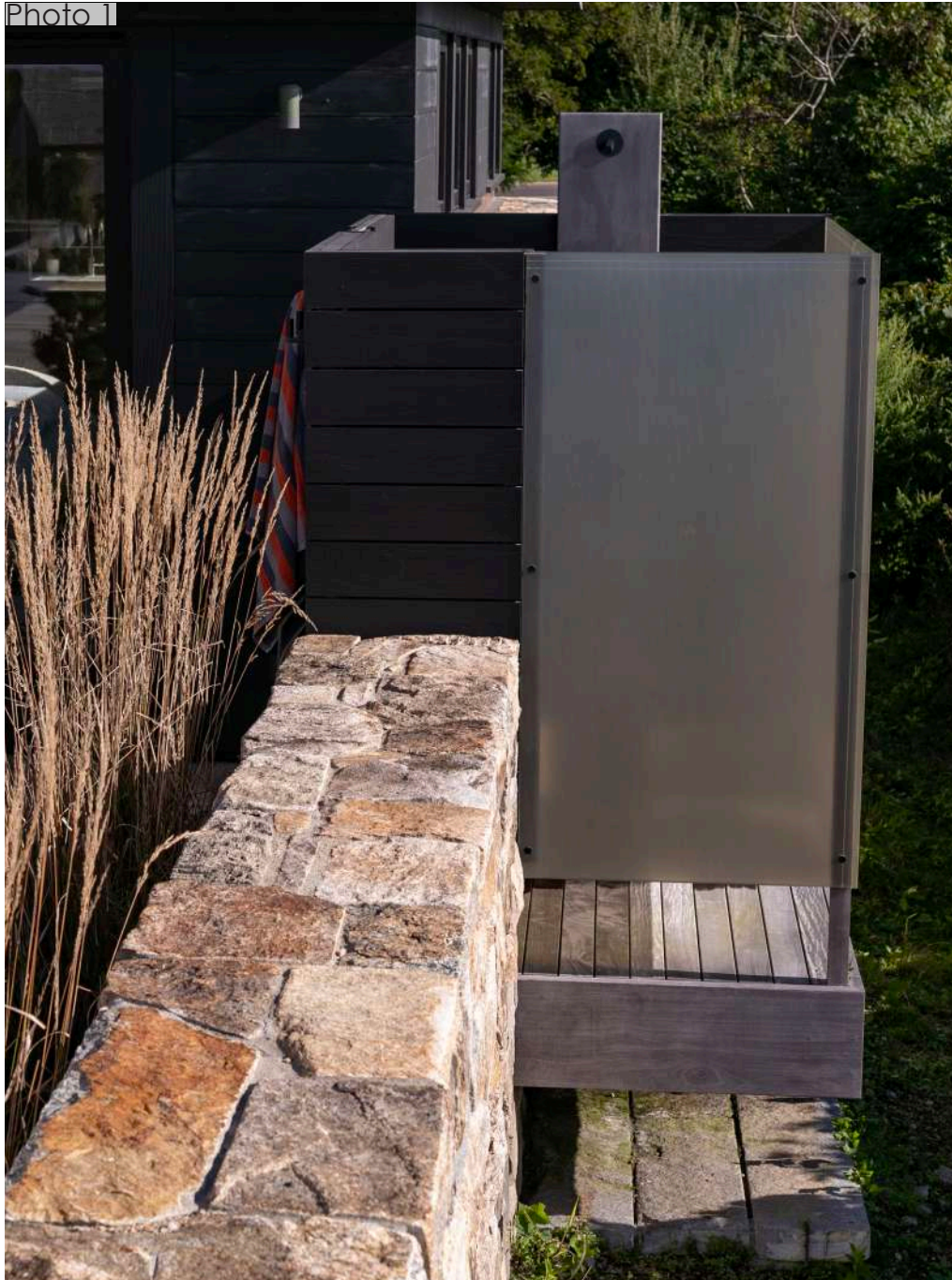
Photo 1



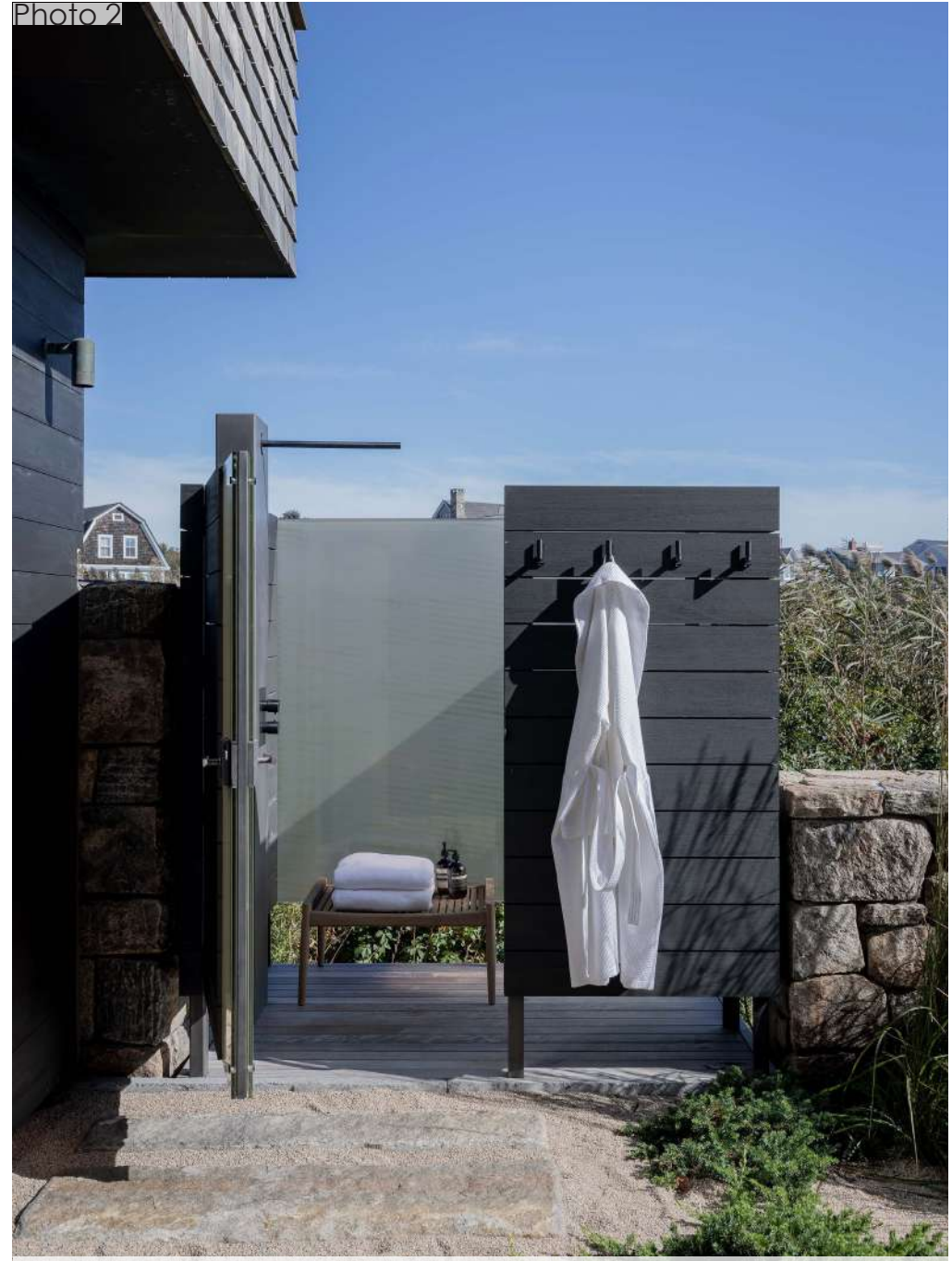
Detail of zen garden. Also shown: reclaimed boulders, local rice stone, custom outdoor shower, stone walls, reclaimed granite steppers.

*Anthony Crisafulli Photography

SLIDE 12: Photography



Detail of outdoor shower cantilevered out from wall.
*Anthony Crisafulli Photography



Detail of outdoor shower.
*Michael J. Lee Photography

SLIDE 13: Photography

Photo 1



Detail of reclaimed granite posts with corten plaques.
*Anthony Crisafulli Photography

Photo 2



Detail of reclaimed granite posts with corten plaques at dusk.

SLIDE 14: Photography

Photo 1



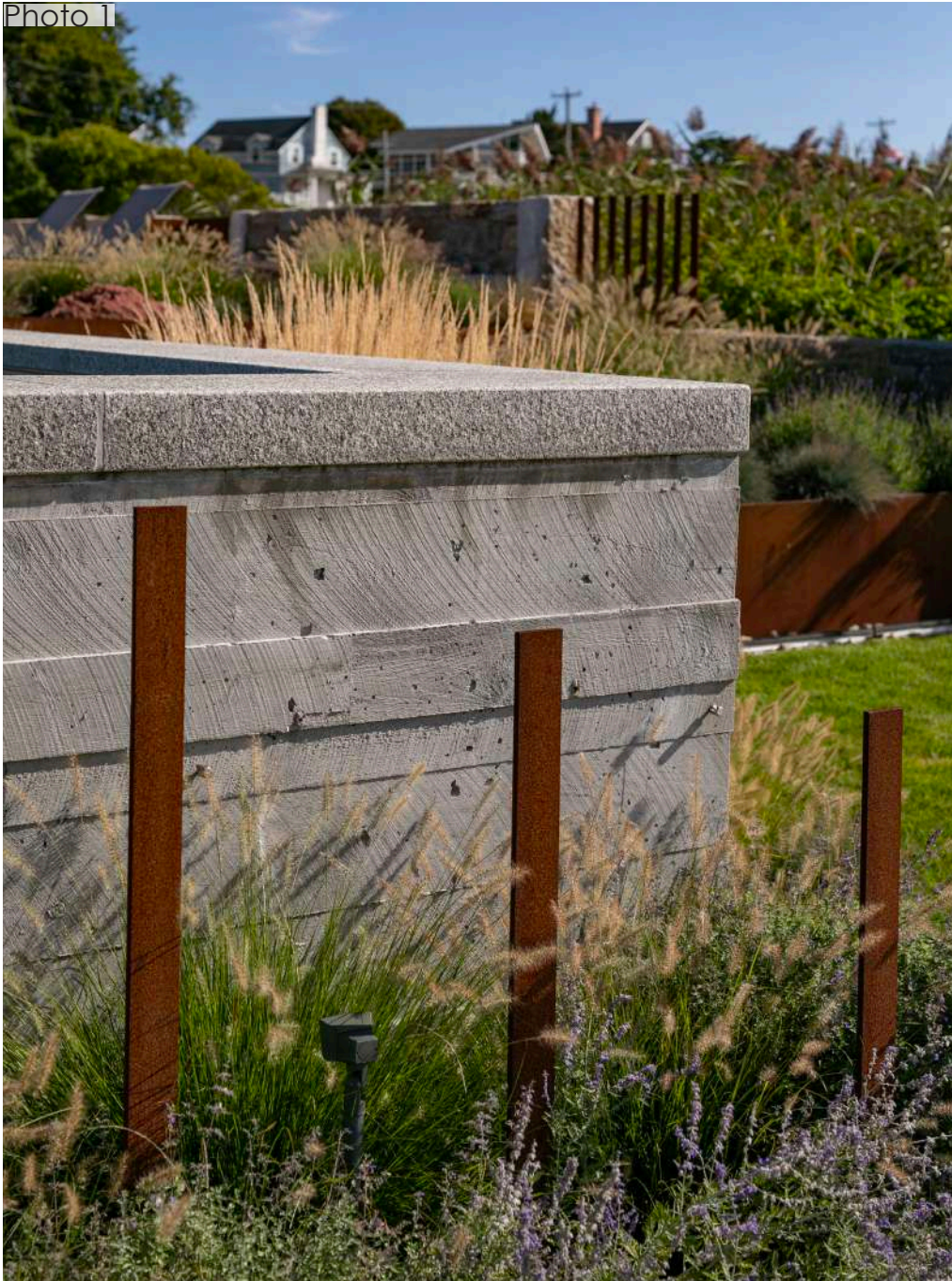
Detail of terraced corten planter beds. Also shown: board form wall, corten fencing, stone walls.

*Anthony Crisafulli Photography

RIASLA 2023 Professional Design Awards - Residential Design
202315 - Fen's Edge

SLIDE 15: Photography

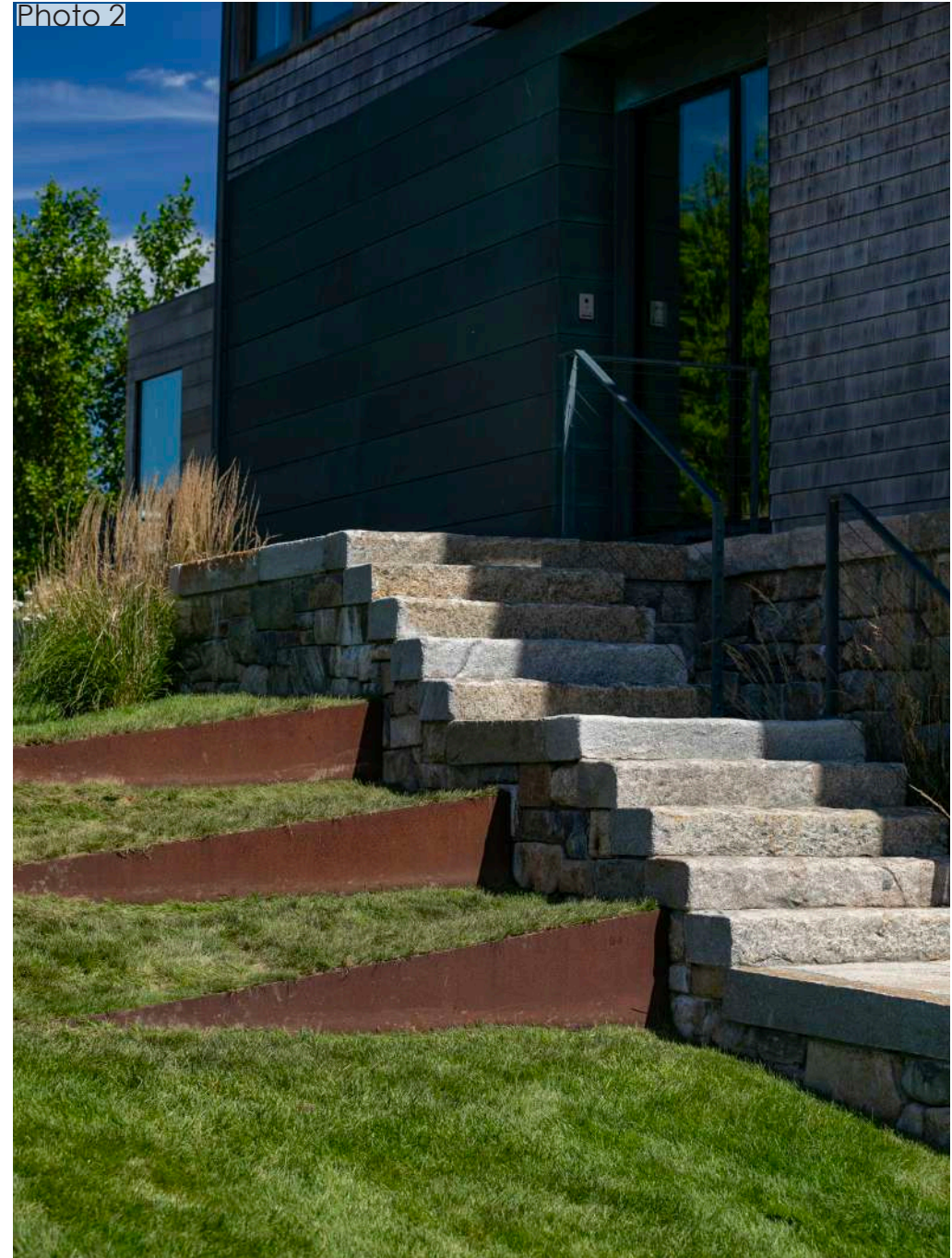
Photo 1



Detail of corten installation and board form walls.

*Anthony Crisafulli Photography

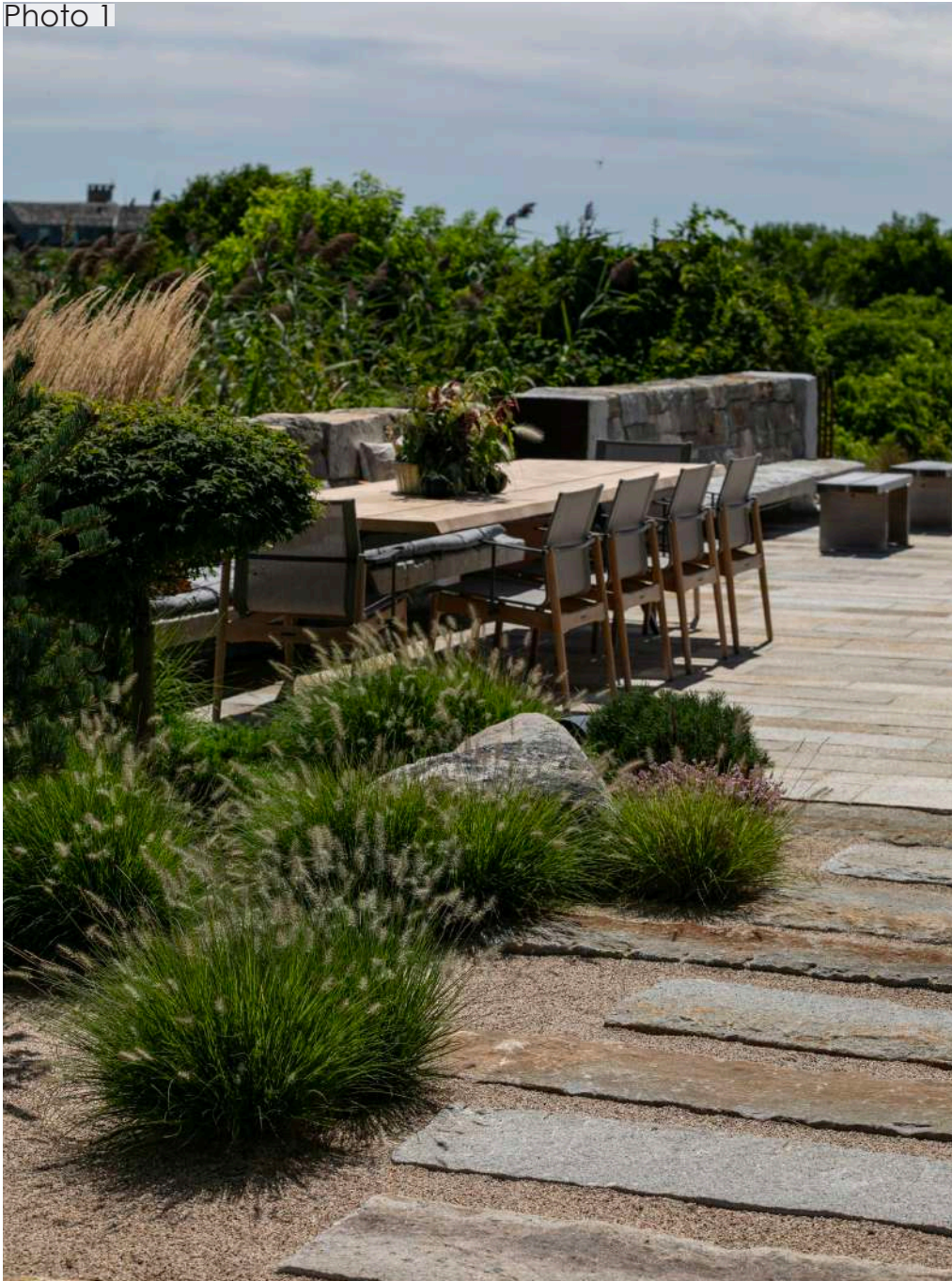
Photo 2



Detail of corten retaining 'walls'.

SLIDE 16: Photography

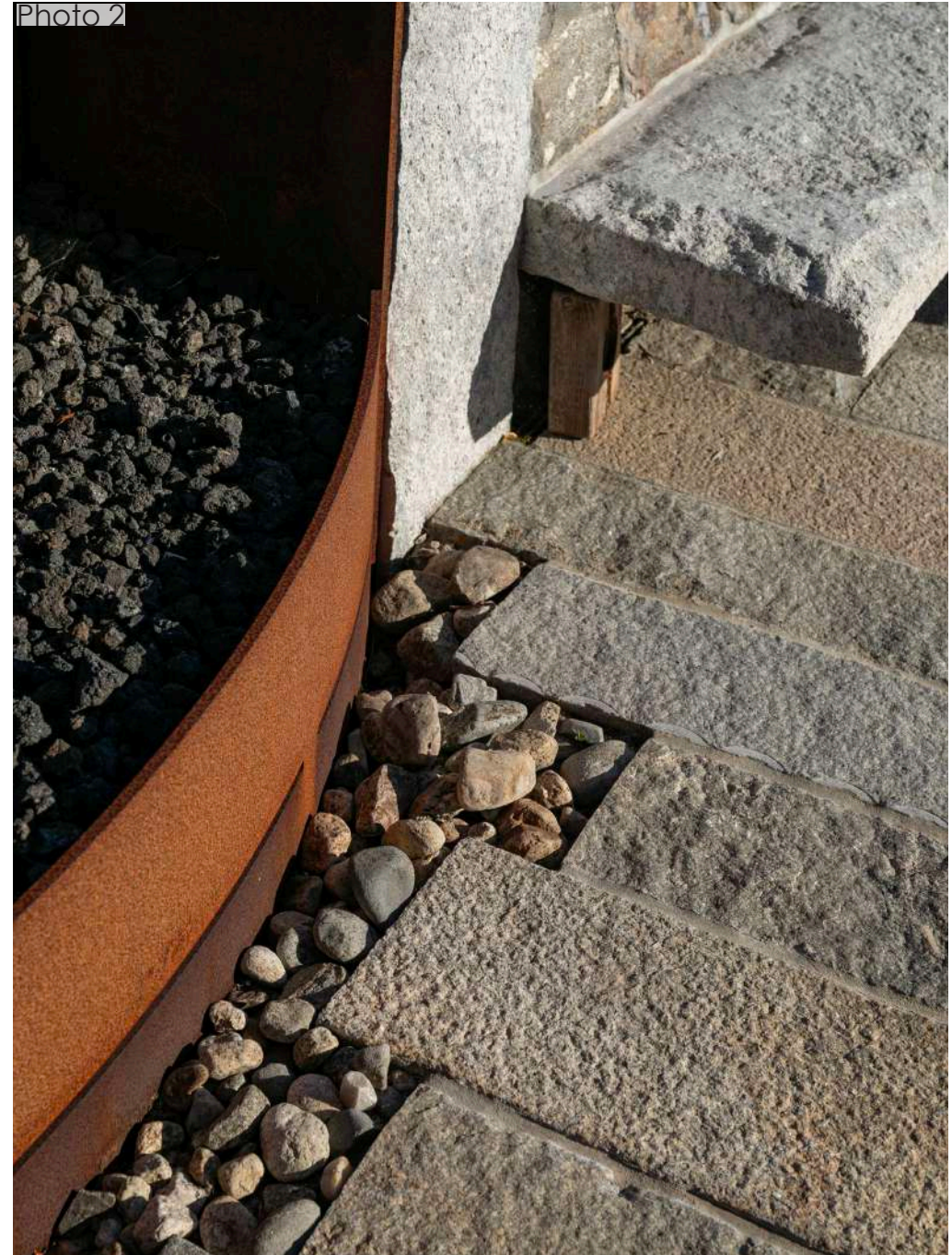
Photo 1



Detail of dining terrace and zen garden.

*Anthony Crisafulli Photography

Photo 2



Detail of corten fireplace.

SLIDE 17: Photography

Photo 1

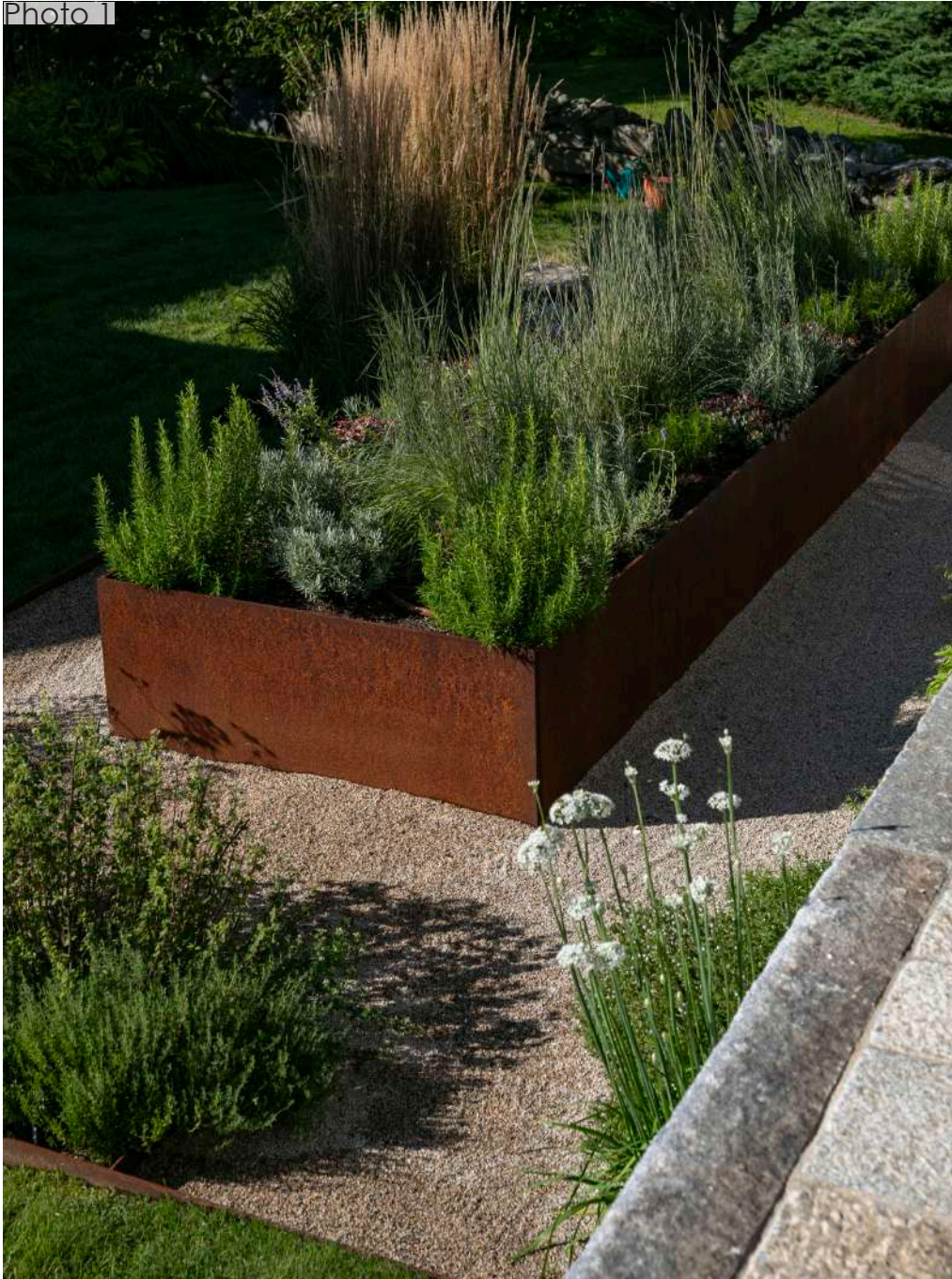


Detail of corten installation. Also shown: board form concrete, pool, reclaimed granite steps, planting.

*Anthony Crisafulli Photography

SLIDE 18: Photography

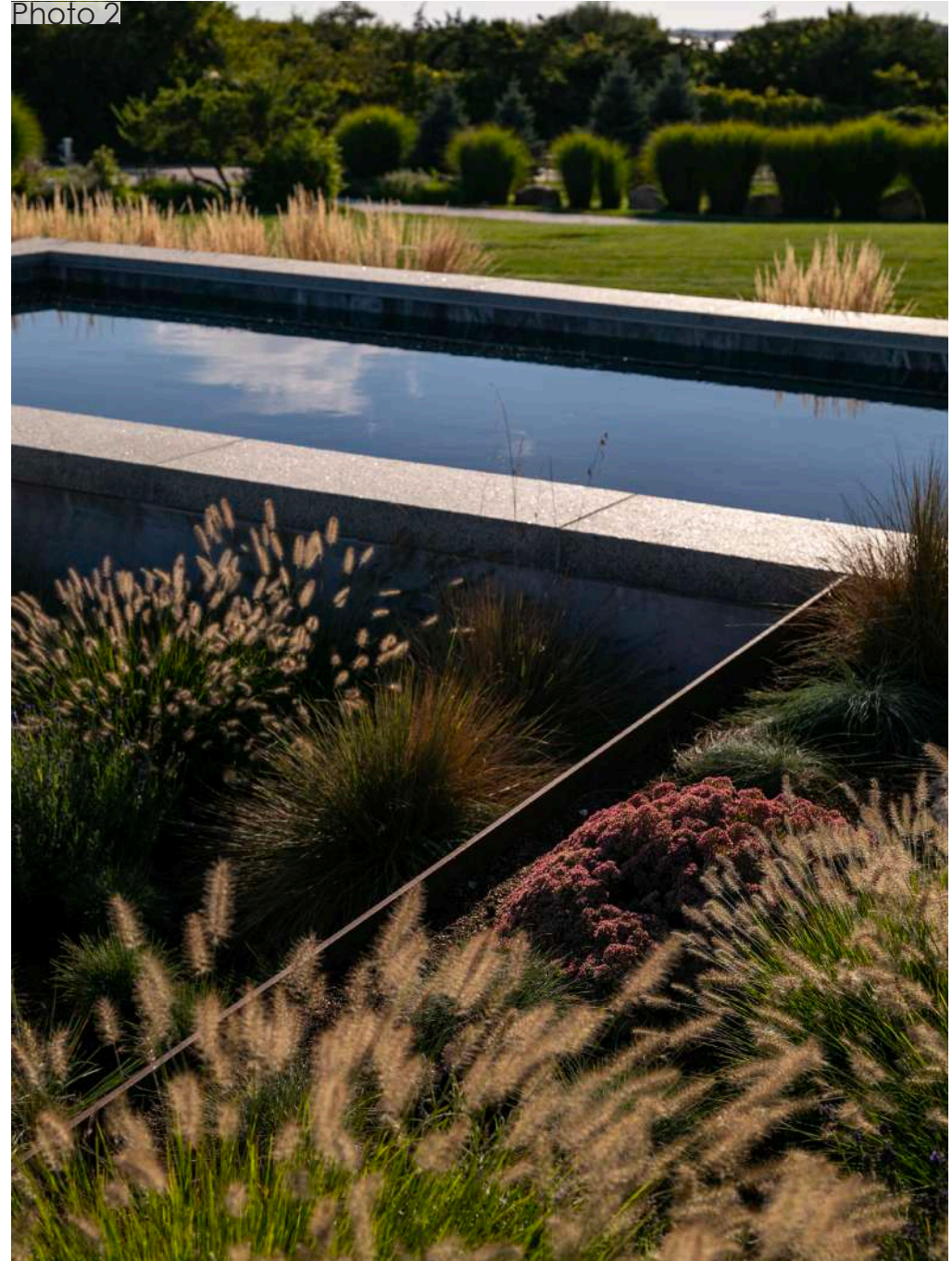
Photo 1



Detail of herb and cutting garden.

*Anthony Crisafulli Photography

Photo 2



Detail of corten terraces and pool.

SLIDE 19: Photography

Photo 1



Detail of corten installation and lighting. Also shown: board form concrete, pool, reclaimed granite steppers, planting.

*Anthony Crisafulli Photography

SLIDE 20: Photography



Detail of zen garden at dusk.

*Anthony Crisafulli Photography



Detail of corten fireplace.